



The Perth 2011 ISAF Sailing World Championships will be staged in waters off Fremantle and Fremantle Inner Harbour from December 3, 2011 to December 18, 2011.

As the largest sailing event in the world for 2011 and also the qualifying event for the London 2012 Olympic Games, there will be significant activity off the metropolitan coast and at Fremantle Fishing Boat Harbour (FFBH).

### ISAF official vessels

Over the period of the event there will be approximately;

- 850 competing dinghies
- 100 race management boats
- 300 coach/support boats
- 30 TV/media and spectator boats

### On the water

DoT is controlling the on water component of the event in consultation with the event organiser and the WA Water Police.

Recreational and commercial skippers who regularly operate in waters out of Fremantle and FFBH need to be familiar with the special arrangements.

### Coastal exclusion zones

Three coastal exclusion zones in waters between Woodman Point and Leighton will prohibit boating in race areas from 8am to sunset on each day of the event.

The three exclusion zones include:

- waters north of the entrance to Fremantle Harbour extending 1.5 nm westward and to the north of Leighton Beach;
- waters south of the entrance to Fremantle Harbour extending west to the Parmelia Success channel and south to Woodman Point; and,
- waters within Fremantle Inner Harbour.

### Water access to FFBH

A temporary, restricted access channel, through the exclusion zone will be put in place for recreational and commercial vessel movements in and out of FFBH, Challenger Harbour and the Fremantle Sailing Club. All vessels will be required to use this channel only during the closure times unless otherwise advised by DoT.

During the event there will be no recreational vessel access to the public boardwalk at FFBH. Sardine Wharf will be closed to all vessels for the duration of the event.

### Fremantle Inner Harbour

Perth 2011 marshal boats will direct vessels moving through the Fremantle Inner Harbour as they will be restricted to an access lane along the harbour wharf. Skippers need to be patient.

### On water control

DoT Marine Safety patrol vessels will be positioned at key locations and officers will be on hand to assist the boating community and those needing to use the designated access channels.

Direct contact to the on water event controllers can be made via either VHF Ch: 9 or 27:72 and the call sign is 'Marine Command'.

### Contacts

For further information visit [www.transport.wa.gov.au/sailingchampionships](http://www.transport.wa.gov.au/sailingchampionships) or contact DoT's Supervising Marine Officer on 9431 1005.

For further information about the event visit [www.perth2011.com](http://www.perth2011.com)

# Perth 2011

## ISAF Sailing World Championships

### Water closures and restrictions

#### 3 - 18 December 2011



**MARINE**  
*Safety*

*Supporting WA's Boating Community*

**MARINE**  
*Safety*

*Supporting WA's Boating Community*

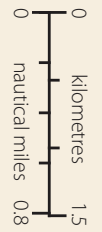
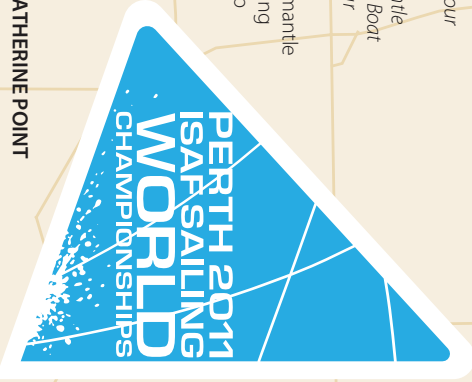
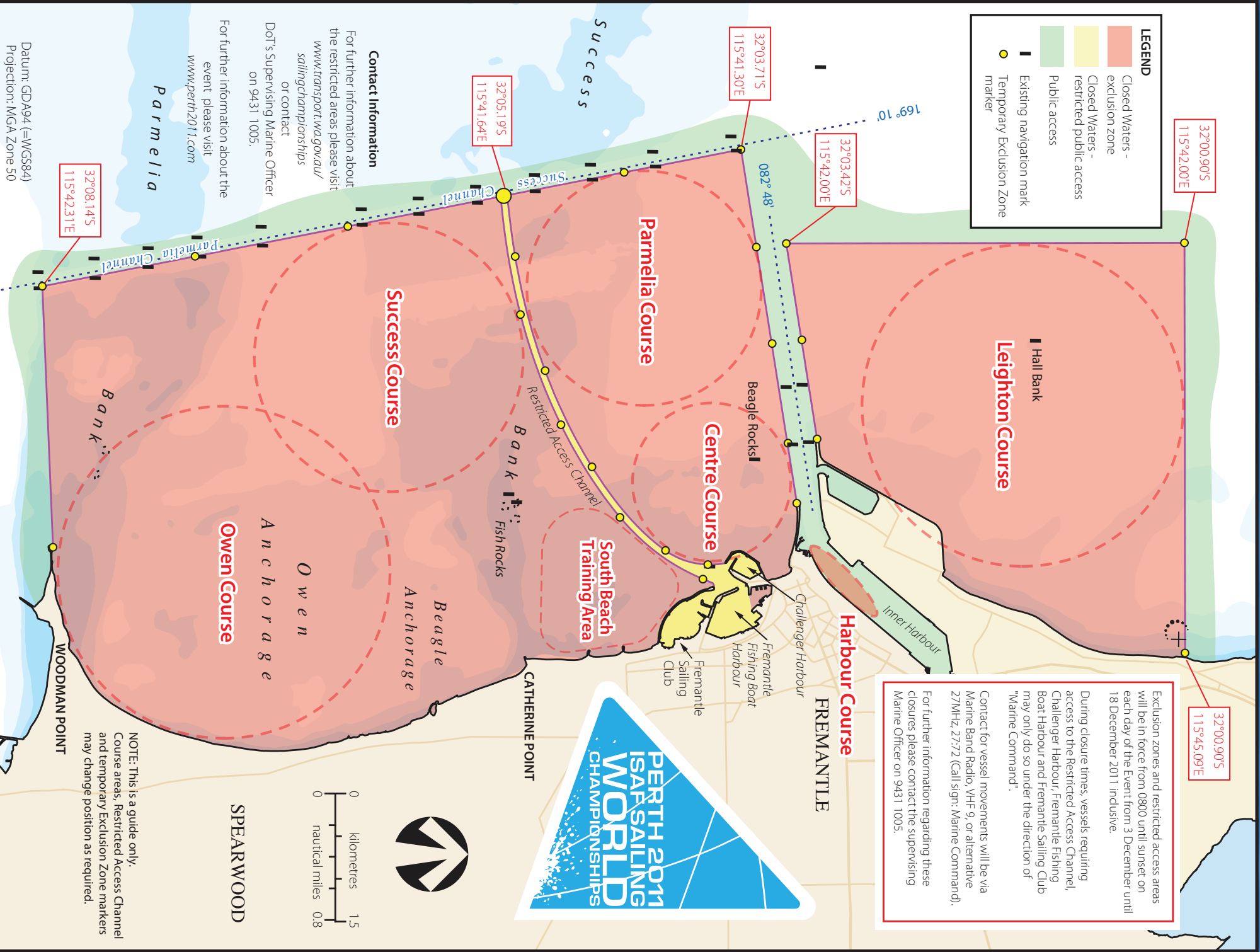
# Perth 2011

## ISAF Sailing World Championships

### Water closures and restrictions

**LEGEND**

- Closed Waters - exclusion zone
- Closed Waters - restricted public access
- Public access
- Existing navigation mark
- Temporary Exclusion Zone marker



**SPEARWOOD**